

# SHOWDAILY™

The Daily News of IMTEX FORMING 2026

DAY  
**2**

**THURSDAY**  
22 JANUARY 2026

Organiser



Indian Machine Tool  
Manufacturers' Association

Supported by



MSME  
MICRO, SMALL & MEDIUM ENTERPRISES  
REGULATORY AND PROMOTION BOARD



International Forming Technology Exhibition

21 - 25 JANUARY 2026, BIEC, BENGALURU

Concurrent Shows



International Exhibition of Tools, Dies, Forming Tools,  
Machine Accessories, Technology and CAD / CAM



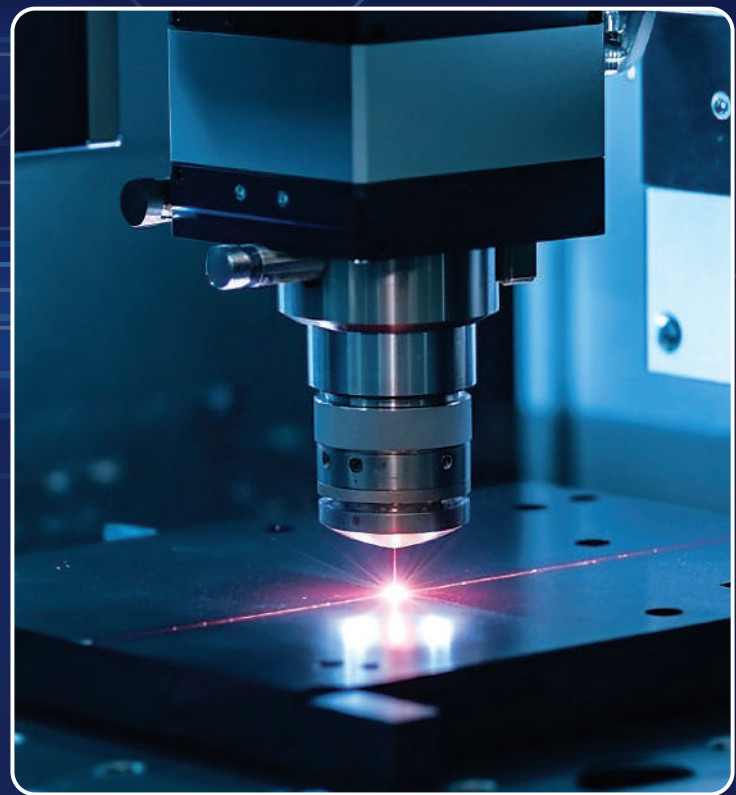
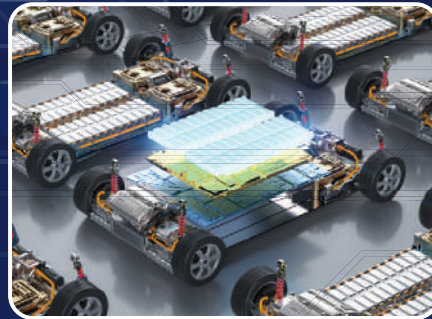
Exhibition for Welding, Cutting & Joining

WELDEXPO™  
In association with

## ASIA'S LEADING FIXTURE BUILDER

Present

## LASER AUTOMATION



Visit us at:



January 21st to 25th 2026

**Hall 4 - B 133**

### Trusted By The World's Best Companies

For over 53 years Forms and Gears has been designing and manufacturing fixtures for the world's leading companies, in 10 countries across the globe and has been at the forefront of introducing the latest technology like Industry 4.0, fixtures enabled with AI, Laser Automation and Laser Welding for EV Batteries.

### RV Forms & Gears LLP

MF 11, SIDCO Industrial Estate, Guindy,  
Chennai - 600 032, Tamilnadu, India  
Call +91 78239 62010 or email us on  
marketing@rvformsandgears.com

[www.rvformsandgears.com](http://www.rvformsandgears.com)





**VALGRO INDIA LIMITED**  
PIONEER | PROSPER | PREVAIL

**Valgro-Hyzer®**  
Technologically Advanced

## Driving the Deburring Force

Scale your success with smart surface solutions.

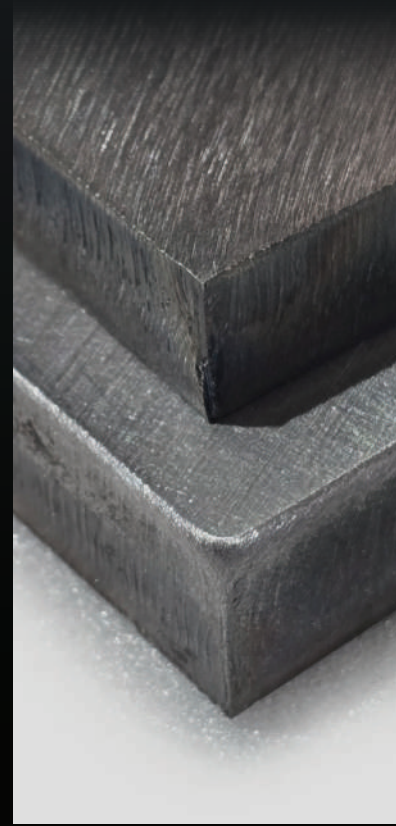
**Hall : 4**  
**Stall : A107**



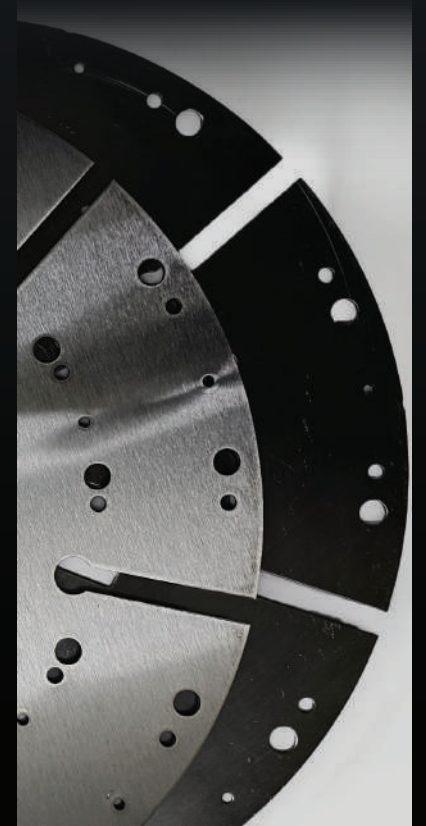
**Slag  
Removal**



**Edge  
Deburring**



**Edge  
Rounding**



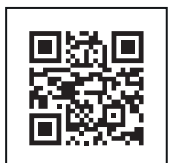
**Metal  
Finishing**

Deburring  
De-Scaling  
Oxide Removal  
Finishing  
De-Greasing  
Sanding  
Cleaning & Washing  
Brushing  
Edge Rounding  
Polishing  
Slag Removal

**METAL**

**Experience live deburring &  
edge-rounding solutions at  
IMTEX 2026**

**BUILDING SOLUTIONS,  
TRANSFORMING TOMORROW**



SCAN ME

# SHOWDAILY™

The Daily News of IMTEX FORMING 2026

DAY  
**2**  
**THURSDAY**  
**22 JANUARY 2026**

Organiser



Indian Machine Tool  
Manufacturers' Association

Supported by



MSME  
MICRO, SMALL & MEDIUM ENTERPRISES  
विद्युत, अणु व नवीकरणीय



International Forming Technology Exhibition

21 - 25 JANUARY 2026, BIEC, BENGALURU

Concurrent Shows



International Exhibition of Tools & Dies, Forming Tools, Machine Accessories, Technology and CAD / CAM



Exhibition for Welding, Cutting & Joining  
In association with

## IMTEX FORMING 2026 OPENS ITS DOORS

# Propelling India's Metal Forming Sector Ahead

Organized by Indian Machine Tool Manufacturers' Association, Asia's largest exhibition on metal forming and manufacturing technologies, IMTEX FORMING 2026 was inaugurated yesterday by Dr S Rajkumar, President, Engine Component Division, Rane (Madras) Ltd and Tarun Mehta, Co-founder & CEO, Ather Energy, at BIEC, Jamshyd N

Godrej, Chairman, Exhibitions, IMTMA; Mohini Kelkar, President, IMTMA; Vikram Salunke, Vice President, IMTMA; and Jibak Dasgupta, Director General & CEO, IMTMA & BIEC shared the dais.

### Expanding Scale, Stronger Global Footprint

Delivering the welcome address, Godrej pointed to the growing

recognition of the machine tool industry by the Government of India through various schemes and the role of IMTEX and other exhibitions held at BIEC in strengthening trade and industrial growth.

He highlighted the expanding footprint of IMTEX through concurrent shows such as Tooltech, Digital Manufacturing, and Weldexpo. "The IMTEX exhibition is rapidly

expanding, and you can notice this through our other events," he said. Commenting on India's global position, he added, "Our machine tool sector will need to import specific machine tools, but we also need to count on our machines being exported to other regions in Europe, USA and so on. As far as technological competence is concerned, we are now at par with other global machine tool manufacturers."



Source: Magic Wand Media

### India's Position in the Global Machine Tool Landscape

Reinforcing this outlook, Dasgupta said, "The Indian Machine Tool Manufacturing industry is growing at a rapid pace. Although all nations understand the need for manufacturing, hardly 20 countries maintain a separate machine tool sector. India sits in the top 10 in this list." He added, "IMTEX creates a platform to harness our machine tool industry's capability and present the best and latest technology from abroad."

To be continued on 4 ▶

THE RACE FOR TOMORROW. SHAPED BY  
**sheet metal innovation**

SLTL Group 37 YEARS

Call +91 7490952219

we'll meet you right where you are

HALL 4 BOOTH B130

Source: Magic Wand Media



From page 3 ▶

### Validating Technologies for Real-World Manufacturing

Speaking on the relevance of IMTEX for end-users, Dr Rajkumar said, “We have been visiting IMTEX continuously and consider it a stage to validate our technologies and source machines,” he said. Addressing the pace of automotive electrification, he noted, “We had predicted complete electrification to happen by 2030. But unfortunately, this has been delayed. Internal

Combustion Engines will remain for another two decades or more.” Highlighting continued investments, he added, “We have recently invested INR 28 crore on expanding the capacity at our facility – a favorable sign for the machine tool manufacturers.”

### Localization, Innovation and New Manufacturing Capabilities

Mehta underlined the importance of localization and long-term

commitment to manufacturing innovation. He pointed to product innovation, saying, “The hybrid aluminum chassis used on Ather scooters is a global first. It is designed, manufactured and tooled entirely in India.”

### Building Talent and Strengthening MSMEs

Salunke drew attention to the role of MSMEs in driving innovation. “A lot of Indian MSMEs are developing excellent solutions today,”

he said, adding that IMTMA through its regional exhibitions aims to guide small manufacturers and help them connect with large enterprises.

### Market Growth and Outlook for Metal Forming

Providing a market perspective, Kelkar, said, “The world is looking for Indian machine tools, and these machines have become an integral part of supply chains around the world. While it is true that we are importing several machine tools, we are also exporting machinery to other countries.”

“It is gratifying to note that intakes for IMTEX FORMING 2026 are up by 20 percent as compared to the previous edition in 2024,” she said.

“This growth is encouraging since it reflects that of the Indian machine tool sector. In FY 24-25, our production of machine tools reached INR 14,500 Cr (US\$ 1.7 billion) while consumption touched INR 32,000 Cr (US\$ 3.7 billion),” she added. In the first half of FY 2025-26, machine tool production reached INR 25,750 crore, while orders worth INR 7,000 crore remain in the order books during the same period, she added. **SD**



# K 200

## JUST CUTTING.

PLASMA CUTTING | 1 - 60 mm





Visit us at IMTEX  
Hall 4, Stand B115

www.kjellberg.de

# HD-TC 60250 Compact

EXPERIENCE  
THE FUTURE WITH  
**DURMA**  
INDIA

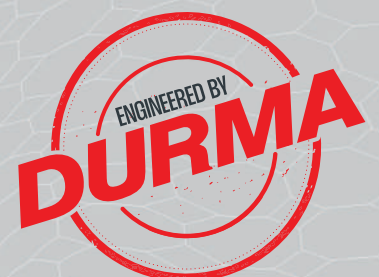


- Excellence in Cutting with Durma Tube & Profile Laser
- Price and Performance Advantage
- Adaptive Profile Support Arms
- Adaptive Unloading System
- Easy to Use and User-Friendly
- Easily Programmable
- Low Operating Cost



Hall 5 Stand B 102  
21<sup>st</sup> - 25<sup>th</sup> January

[www.durmaindia.com](http://www.durmaindia.com)



**AWARDS & ACCOLADES**

## IMTMA Bestows Rajamane Industries Ltd with Cooper Award



Source: Magic Wand Media

The prestigious IMTMA - Cooper Award for Outstanding Supply Chain Unit, instituted in memory of Sir DB Cooper, was conferred on Rajamane Industries Pvt Ltd during IMTEX FORMING 2026, on January 21, 2026, at BIEC, Bengaluru. The award recognizes the vital contribution of supply chain units to India's machine tool industry.

Established in 1975 at Bengaluru, Rajamane Industries is one of India's leading manufacturers of coolant pumps and has made significant strides in electric motors, auto components, castings, and other products for the machine tool and allied industries. Rooted in a strong focus on research and development, continuous innovation, and a customer-centric approach, Rajamane Industries has earned the trust of leading machine tool manufacturers and global OEMs. As it marks 50 years of excellence, the company continues to strengthen India's manufacturing ecosystem as a dependable supply chain partner. **SD**

**AWARDS & ACCOLADES**

## IMTMA Honors TK Karuppannaswamy with Premier Entrepreneur Award



Source: Magic Wand Media

The IMTMA - Premier Outstanding Entrepreneur Award, instituted in memory of Vinod Doshi, was conferred on T K Karuppannaswamy, Founder & Chairman, Barani Hydraulics India Pvt Ltd, during IMTEX FORMING 2026.

A mechanical engineering graduate from Coimbatore, he gained early industry exposure at Lakshmi Machine Works Ltd and advanced technical training at Hindustan Machine Tools, Bengaluru, before founding Barani Hydraulics in 1988 as a small-scale enterprise.

From manufacturing basic hydraulic jacks and small hydraulic presses, Barani Hydraulics evolved into a globally recognized hydraulic press manufacturer. Ahead of its time, it built machines with artificial intelligence and began exporting tire manufacturing machines to various countries. Beyond industrial success, Karuppannaswamy's leadership reflects a deep commitment to skill development, employment generation, and education, which has created a lasting impact on the Indian machine tool and manufacturing industry. **SD**



**INTERNATIONAL SEMINAR ON FORMING TECHNOLOGY**  
22 - 23 January 2026, BIEC, Bengaluru

**DAY 1** | Date: Jan 22, 2026 | Time: 11.00 am  
Venue: Conference Centre

**DAY 2** | Date: Jan 23, 2026 | Time: 11.00 am  
Venue: Conference Centre

**TODAY'S ENGAGEMENT**

### ISFT 2026: Forming the Future, Today

**INDUSTRY DELEGATE**

## "IMTEX FORMING is Relevant and Cutting-Edge"



Source: Magic Wand Media

Ajit Kumar Alok, Principal Chief Engineer, Rail Wheel Factory, Yalahanka, Bangalore, (3rd from left) along with his team members at IMTEX FORMING 2026.

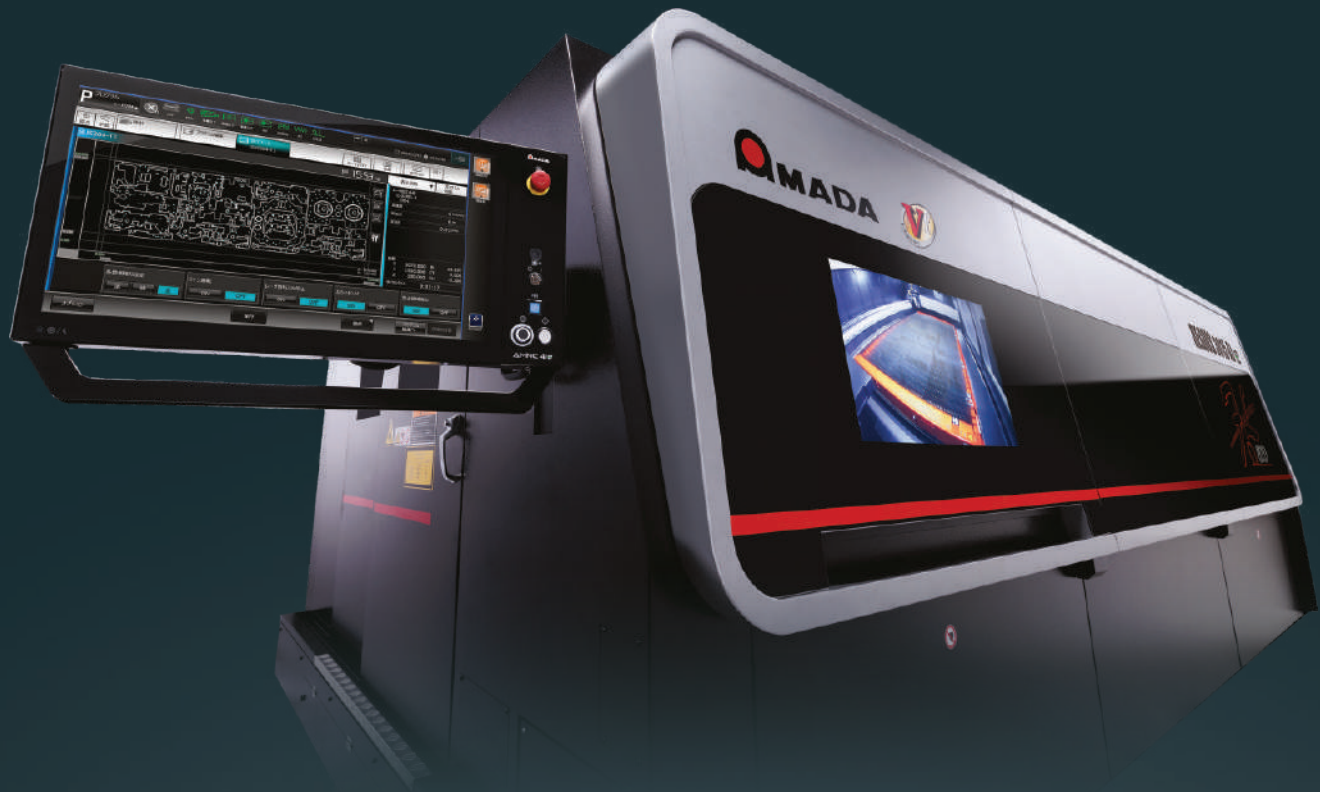
This is my second visit to IMTEX after a long gap, and the evolution of technology on display is clearly evident. We have come as a team to explore new machinery that could be useful for our operations. I saw several advanced laser cutting and joining solutions at the exhibition. For metal plates up to 8 mm thickness, some excellent

machines are being showcased, particularly in terms of the seamless finish they deliver. While our current requirement is for 20 mm thickness and above, the quality of machining on display is noteworthy. One of the key strengths of IMTEX is that it brings together planners, designers, vendors, and other stakeholders who are part of the manufacturing ecosystem. They can collectively plan new manufacturing setups for a specific product development.

Digitalization is becoming increasingly important in manufacturing, especially for monitoring machine condition and performance. I observed several technologies at IMTEX FORMING 2026 that enable predictive maintenance by identifying potential failures. This makes the exhibition highly relevant and up to date.

With the Government of India encouraging quality manufacturing using indigenous machinery and supporting such initiatives, we are actively looking to upgrade our existing systems. Our focus areas include improving accuracy, reducing wastage, saving time, and enhancing energy efficiency. In this context, we were particularly satisfied with the technologies showcased under Weldexpo and Digital Manufacturing, some of which can also contribute to reducing carbon footprint. IMTEX FORMING 2026 has provided a valuable opportunity to compare indigenous solutions with the latest global technologies. **SD**

# Future Technologies with Amada



3axis linear drive fiber laser machine

**REGIUS AJ** SERIES

To the next level  
in laser processing



Servo drive bending machine

**EGB** SERIES

People and environment  
friendly



Fiber laser welding system

**FLW ENSIS** SERIES

Taking welding  
to the next level



Manufacturing DX Solutions

**LIVLOTS**

Seamless connectivity  
between each site

Growing Together with Our Customers

Amada (India) Pvt Ltd.



Visit Us at: Hall 5,  
Stall No. B107



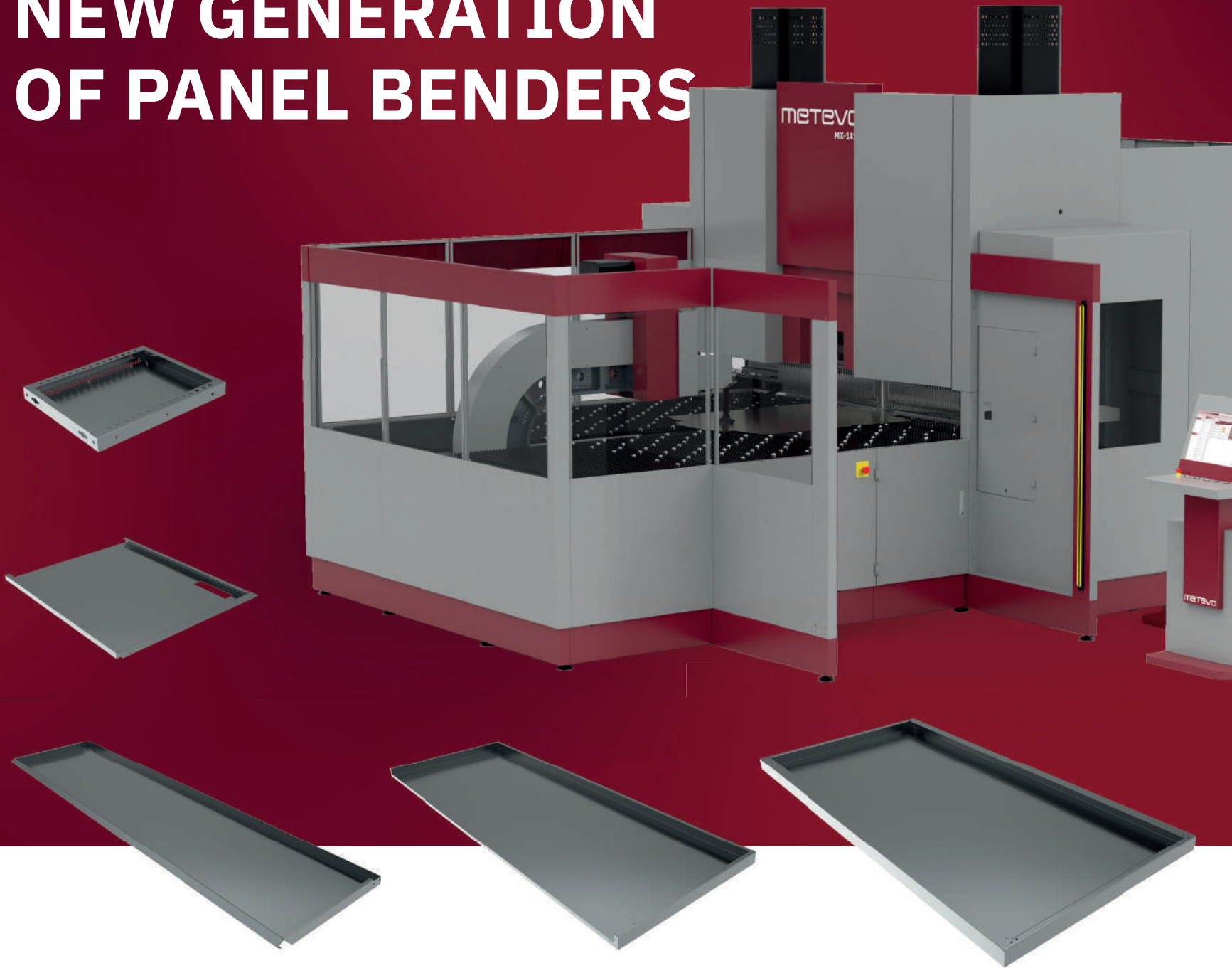
Technical and Vocational Center

No.60, KIADB Bengaluru Aerospace Park,  
Singahalli Village, Budigere Post, Bnagalore,  
North Taluk - 562129, India.  
Ph: 080-71100200





## NEW GENERATION OF PANEL BENDERS



More productive  
than a traditional  
press brake



Ideal for  
medium-to-high  
volumes



Fully CE compliant,  
designed with safety  
and reliability in mind

**Metevo introduces a new generation of panel benders, a cost-effective solution designed to boost productivity, reduce labour costs and the need for press brakes in standard panel production.**



SCAN HERE TO DISCOVER MORE

[info@met-evo.com](mailto:info@met-evo.com)  
[met-evo.com](http://met-evo.com)

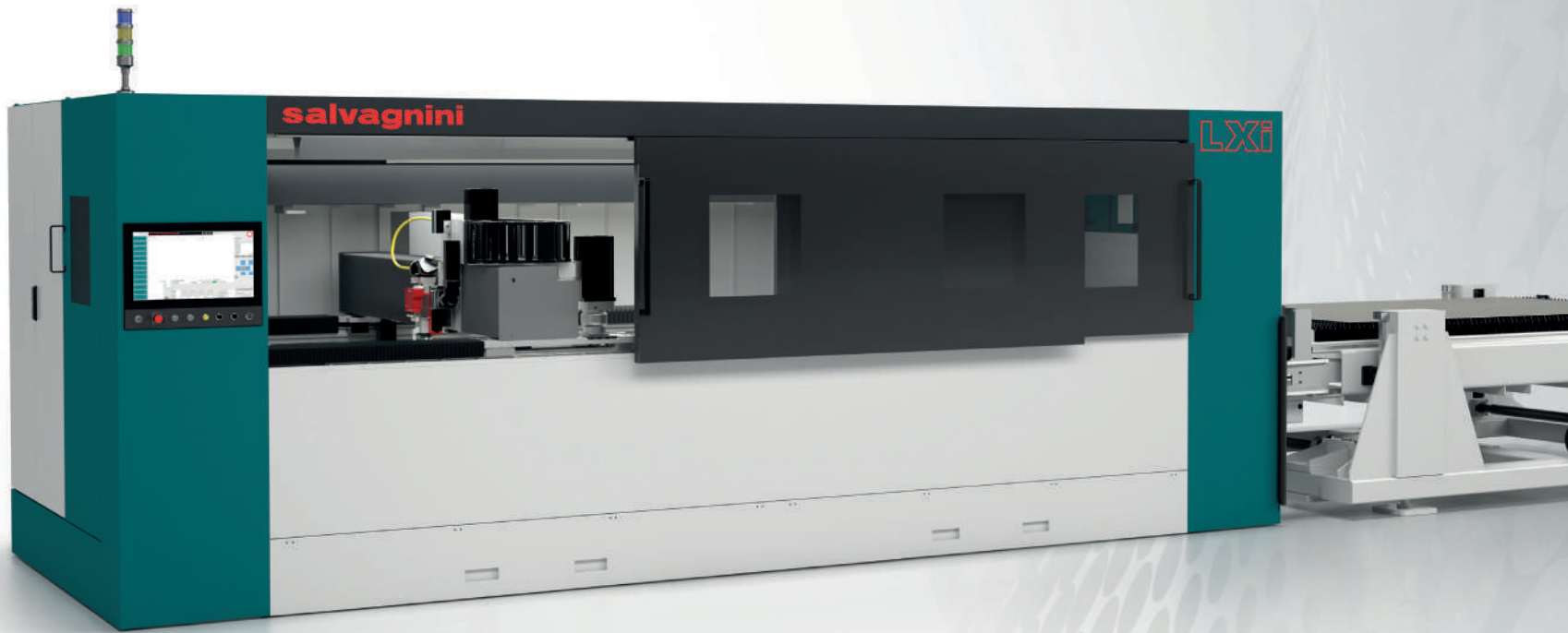


IMTEX  
21-25 January 2026  
HALL 5 B101

LXi

Worldwide premiere at IMTEX 2026

# THE NEW STANDARD IN LASER CUTTING



**+** HIGH ACCESSIBILITY

**+** COMPACT FOOTPRINT

**+** INTUITIVE HMI

**+** HIGH PERFORMANCE

**+** PROPRIETARY CUTTING HEAD

**+** ITALIAN TECHNOLOGY, MADE IN INDIA

Developed from over 30 years of research and innovation, LXi delivers **accessibility, compactness and performance** in one solution. With a **6 kW fiber laser source** and pallet changer for efficient manual loading/unloading, it maximizes **productivity** while keeping **precision** and **cut quality** at the highest level. The LXi will make its world premiere at Hall 5 B101.



**salvagnini**

**AWARDS & ACCOLADES**

**IMTMA Best Design Award 2026**

The prestigious IMTMA Best Design Award has been instituted to recognize and reward companies for their best indigenously designed and developed products showcased at IMTEX. This year, the following companies have received the accolade: Electro Pneumatics and Hydraulics (India) Pvt Ltd (for rotary draw tube bender model 32CNC11X6-LR) and ISGEC Heavy Engineering Ltd (for its 3000T mechanical transfer press).



The IMTMA Export Performance Award is to recognize and reward member companies who have made significant achievement in exports of machine tools and related products. This year, the award has been conferred on three companies – Ace Designers Ltd (Metal Cutting Category), Barani Hydraulics India Pvt Ltd (Metal Forming Category), and Electronica Mechatronic Systems (India) Pvt Ltd (Accessories Category), setting the bar in their respective categories.

**IMTMA Export Performance Award in Memory of Shailesh R. Sheth**



**IMTMA INITIATIVE**

**i2 Academia Pavilion: Where Learning Meets Industry**

The i2 Academia Pavilion is a flagship initiative of the Indian Machine Tool Manufacturers' Association (IMTMA) aimed at strengthening collaboration between industry and academia. The platform enables both sides to engage more closely for the development of transformative technologies and gain a deeper understanding of each other's perspectives and challenges through IMTEX, IMTMA's premier machine tool exhibition.

The pavilion offers Indian academic and R&D institutions an exclusive opportunity to showcase their research and development capabilities in metal forming. Selected institutions are given a platform to present their research and demonstrate applications to an industry-focused audience. This year's edition features participation from 32 colleges and around 70 representatives from 24 cities. Some of the participating institutions include Aditya College of Engineering and Technology, Bengaluru; Amrita Vishwa Vidyapeetham, Kollam; Chennai Institute of Technology, Chennai; D.K.T.E. Society's Textile & Engineering Institute, Kolhapur; Faculty of Engineering and Technology, Jain University, Bengaluru; Indian Institute of Technology, Mumbai; Indian Institute of Technology, Tirupati; School of Marine Engineering & Technology, Indian Maritime University, Kolkata;

Vishwakarma Institute of Technology, Pune; Jerusalem College of Engineering, Chennai; Kingston Engineering College, Vellore; KLS Gogte Institute of Technology, Belagavi; Maharashtra Institute of Technology, Chhatrapati Sambhajnagar; NMAM Institute of Technology, Udipi; and PES Institute of Technology and Management, Shimoga. **SD**



Source: Magic Wand Media



**FACTORYS OF TOMORROW**

- + BUILD
- + MAINTAIN
- + UPGRADE

**FACTEQ® 2026**  
Factory Equipment Expo

**7 - 10 September 2026**  
Pune International Exhibition and Convention Center, Moshi, Pune

[www.facteq.in](http://www.facteq.in)

Co-located Show

**PUNE MACHINE TOOL EXPO 2026**

Powered by IMTMA, organizer of

**IMTEX**

**BOOK YOUR SPACE TODAY**

Contact: Nishant Singh  
Mob: +91 9823174010  
Email: nishant@imtma.in

For enquires: info@facteq.in      Follow us on:



# AMPCO METAL

## EXPERT MATERIALS FOR TUBE FORMING APPLICATIONS

AMPCO® Aluminium Bronze Alloys for an absolutely perfect surface on Stainless Steel

With high hardness, high compressive strength and non-magnetic properties of AMPCO® 25, you get:

- Very good sliding characteristics
- No cold welds on the forming rolls
- Excellent surface finish on carbon, stainless steel and titanium tubes
- Extended life time of forming rolls
- No hardening or expensive coatings on the rolls required
- Easy to regrind & re profile



**AMPCO METAL INDIA PVT. LTD.**  
A-8/4, Village - Nighoje,  
Chakan MIDC, Phase IV, Tal : Khed  
Pune – 410501,  
Maharashtra - INDIA  
Tel. +91 2135 610 810  
Infoindia@ampcometal.com

**AMPCO METAL S.A.**  
Route de Chésalles 48  
P.O.Box 45, 1723 Marly  
SWITZERLAND  
TOLL FREE PHONE: 800 8080 5050  
Tel.: +41 26 439 93 00  
Info@ampcometal.com



**BLANK-TO-BEND MANUFACTURING SOLUTIONS**

# Durma India Brings Substance to Sheet Metal



**Durma India Pvt Ltd**  
[www.durmaindia.com](http://www.durmaindia.com) | Hall & Stall: 5/B-102

“Direct interaction at IMTEX FORMING 2026 is extremely important because machines are rarely evaluated on specifications alone.”

**NIRAJ SETH**  
Director & Chief Executive Officer  
Durma India Pvt Ltd



According to Niraj Seth, Director & Chief Executive Officer, Durma India Pvt Ltd, IMTEX FORMING allows the company to present Durmazlar's core engineering principles, including rigid machine construction, precise motion systems, and control platforms designed for industrial duty cycles.

The company's display features a 6kW fiber laser cutting machine, a PB4 Panel Bender, a tube laser cutting machine, and a CNC press brake. Seth explains that these machines are selected because they address the most critical processes in sheet metal fabrication and enable a comple-

te "blank to bend" workflow in a digital environment. The HD-F series is engineered for stable and repeatable performance, the PB4 panel bender reflects deep process understanding, whereas the AD-S press brakes combine monoblock frame construction, synchronized bending axes, and more.

**Productivity by Design**

The company's core message this year is clear: "Our focus

is on delivering productivity through smart, application-driven design rather than unnecessary complexity. Durma machines are built to simplify cutting and bending processes while ensuring consistent accuracy and repeatability. At the same time, they are future ready, capable of operating efficiently as standalone systems today and supporting automation and digital integration as customer requirements evolve." **SD**

**LASER CUTTING MACHINES**

## A Versatile Laser Solution

The ELEMENT 400 L excels in bevel laser cutting processes, ensuring perfect cuts for both serial tasks in continuous operation and special tasks. The steel crossbeam and X-axis structure feature precision-machined surfaces and linear ways, providing maximum stability and smooth, stable motion.

Equipped with AC servo drives and premium quality planetary gearboxes, the machine delivers maximum simultaneous positioning speeds and virtually eliminates backlash for smooth, repeatable motion. A hydraulic up/down enabled shuttle system allows for single-level bevel cutting, achieving faster cut jobs with high accuracy. **SD**

**Messer Cutting Systems India Pvt Ltd**  
[www.in.messer-cutting.com/products/machines/element400l](http://www.in.messer-cutting.com/products/machines/element400l)  
Hall & Stall: 5/A-110



**PLASMA CUTTING SYSTEMS**

## K 200 for Simple Operation

The K 200 offers optimum and reliable plasma cutting results up to 60 mm and easy operation at the lowest cost. The plasma power source cuts with oxygen, air, or nitrogen, and offers a marking function. The integrated automatic gas control and direct connection of the torch simplify installation and maintenance of the system.

A manual torch extends the range of applications to manual cutting and gouging. The K 200 can be fully integrated into CNC guidance systems or operated via the corresponding K-Desk app. The menu-driven interface offers intuitive access to all important data and parameters of the power source, allowing one to select and adjust cutting data sets. **SD**

**Kjellberg Cutting and Welding India Pvt Ltd**  
[www.kjellberg.de/home.html](http://www.kjellberg.de/home.html)  
Hall & Stall: 4/B-115



## Catalyzing Indian Manufacturing



Indian Machine Tool Manufacturers' Association

**IMTMA Membership Benefits**

- Networking opportunities with key customer segments
- Special rates for participation in select events and training programmes
- Access to technical advisors and experts for business development
- Recognition through Awards
- Facilitation with institutions and agencies for technology development
- Access to publications and reports
- Access to export market opportunities through Buyer-Seller Meet / Delegation visits / Exhibition participation, etc.



**Join our members' community**

For details: +91 80 6624 6629  
membership@imtma.in

[www.imtma.in](http://www.imtma.in)

# THINK BEYOND PRESS BRAKE

Less Handling, More Accuracy

Schröder folds where press brake falls short



From delicate thin sheets to heavy-duty applications up to 16 mm, Schröder delivers flawless bends with repeatable accuracy, reduced handling time, and maximum efficiency. Whether for industrial production, vehicle construction, or custom fabrication, Schröder machines empower manufacturers to achieve speed, strength, and superior quality in every fold



**MEET US AT**  
**HALL 4**  
**B105**

**RadCAM Technologies Pvt. Ltd.**  
Plot no 45, Airport Road,  
Bettahalasuru Cross,  
Chikkajala, Bengaluru, 562157

**LASER, BENDING, WELDING SOLUTIONS**

# Where Throughput Finds Balance



**Sinar Sheetmetal Solutions Pvt Ltd**  
www.sinarsolution.com | Hall & Stall: 4/B-114

“Manufacturers can improve productivity and quality with reliable, precision-focused, and automation-ready fabrication solutions. We look forward to meeting customers, understanding shopfloor challenges, and demonstrating solutions that improve productivity and quality.”

**DR LAXMIKANT KANAPPAN**  
Managing Director  
Sinar Sheetmetal Solutions Pvt Ltd



Commenting on the importance of the event, Dr Laxmikant K, Managing Director, Sinar Sheetmetal Solutions Pvt Ltd, notes that IMTEX FORMING provides an opportunity to meet customers, understand their production challenges, and demonstrate solutions that can improve productivity and quality. The company expects the show to generate strong enquiries related to new machi-

ne investments, automation upgrades, and capacity expansion projects.

### Game-Changer Solutions

At the event, Sinar Sheetmetal Solutions is showcasing its complete portfolio, including Laser Cutting Machines, Press Brakes, and Welding Automation solutions focused on speed, accuracy, and consistent output. Upgraded confi-

gurations for improved productivity and automation readiness are also highlighted.

For Tier-1 and Tier-2 suppliers, its game-changer solution is high-performance laser cutting with automation support, enabling faster throughput with repeatable quality. It is also showcasing an in-house developed high-end, easy to use software.

According to Dr Laxmikant, “Laser cutting increases speed and consistency, press brakes ensure repeatable bending accuracy, and welding automation improves weld quality with reduced cycle time.” Together, these technologies help reduce rework and dependence on manual processes, leading to more stable production output. **SD**

**5-AXIS FIBER LASER CUTTING SYSTEMS**

# Redefining 3D Laser Processing

X5 is SLTL Group’s powerful answer to modern manufacturing needs where precision, speed, and flexi-

bility matter most. Built with true 5-axis capability using A and C rotational axes, X5 cuts complex 3D shapes, deep contours, bevels, and hard-to-reach angles in a single setup. No re-fixturing, no secondary operations, just faster production with perfect accuracy. Its rigid gantry structure and high-speed motion system deliver clean edges, tight tolerances, and consistent quality

on every part. X5 easily handles large sheets, formed parts, and tall components with its expansive work area and extended Z-axis option. Industry 4.0 ready, X5 offers real-time monitoring, predictive maintenance, and performance insights for smarter, data-driven production. An operator-friendly interface and movable control panel make daily operation easy

and efficient. Ideal for automotive, engineering, heavy fabrication, aerospace, and structural industries, X5 reduces setup time, saves labor, cuts costs, and boosts productivity. **SD**



**SLTL Group**  
www.sltil.com  
Hall & Stall: 4/B-130

**ENHANCING THE PERFORMANCE OF MACHINES**

TESTING

TROUBLE SHOOTING

PROBLEM SOLVING

**AMTTF**  
ADVANCED MACHINE TOOL TESTING FACILITY  
An ISO 9001:2015 Certified Testing Facility

JOINT PROJECT BY

**ADVANCED MACHINE TOOL TESTING FACILITY**  
CMTI Campus, Tumkur Road, Bangalore - 560022,  
Telephone : 080 22188322 / 08867475758  
Email : director@amttf.in

[www.amttf.in](http://www.amttf.in)

**ADVANCED LASER AND AUTOMATION SOLUTIONS**

# TRUMPF Unveils Advanced Laser and Automation Solutions at IMTEX FORMING 2026



**TRUMPF India Pvt Ltd**  
[www.trumpf.com/en\\_IN/](http://www.trumpf.com/en_IN/) | Hall & Stall: 4/B-101

TRUMPF made a strong opening at IMTEX FORMING 2026, presenting an action-packed showcase of smart, high-performance manufacturing solutions. Visitors were welcomed to live demonstrations that underscored speed, precision, and automation. The spotlight was on a 2D Laser Cutting Machine with automation, designed for job shops with simultaneous loading and unloading, enhanced by FlexLine nozzle technology and CutAssist, where AI fine-tunes parameters for superior edge finish. Also on display are the versatile TruPunch 1000, along with the Made-in-India TruBend 1225 and

TruBend 1150 press brakes, 'Pride of Bharat', featuring integrated automation and sheet follower systems. The main objective of automation is to solve the shortage of skilled manpower in sheet metal industries. With entry level automation developed in India and aligned to the market needs in the country, the barrier for adapting automation is getting resolved. Completing the lineup are the TruLaser Cell 5030 for 2D/3D cutting and welding and the compact TruLaser Station 7000 for precision 3D laser welding, highlighting TRUMPF's strong focus on automotive, EV, and advanced manufacturing applications. **SD**

**DEBURRING, EDGE ROUNDING, & SURFACE FINISHING SOLUTIONS**

# Valgro India Launches Advanced Solutions



**Valgro India Ltd**  
[www.valgroindia.com](http://www.valgroindia.com) | Hall & Stall: 4/A-107

Valgro India Ltd has launched two advanced solutions—the RBM Series and the DEB Series—to transform the way manufacturers approach edge finishing and surface preparation. The RBM Series (Rotary Brush Machine) is engineered for high-speed deburring and edge rounding of laser-cut and punched components. It uses powerful rotary brush technology to remove sharp edges and micro-burrs while creating a smooth, uniform edge radius on both the top and bottom surfaces. RBM is ideal for job shops and production lines that handle large quantities of flat sheet metal parts. It eliminates manual edge finishing, ensuring that every component

meets safety and quality standards before moving to welding, bending, coating, or assembly. The DEB Series, a complete deburring, edge rounding, and surface finishing solution, is a more advanced and versatile system designed for manufacturers who require burr removal, slag removal, oxide cleaning, edge rounding, and surface finishing—all in a single pass. DEB combines wide belt grinding stations with rotary brush and finishing heads to deliver uniform results across the entire part. It can process laser-cut, plasma-cut, flame-cut, punched, and machined components, making it a complete finishing solution for high-precision industries. **SD**

**Follow Modern Manufacturing India on MMI LinkedIn**



**JQLASER**  
172 CUSTOMERS

**MAKE IN INDIA**  
Made in Faridabad, Haryana India

**SHARDA ENGINEERS**  
332 MACHINES

**You Tube Channel: Sharda Engineers, Faridabad**

[www.shengg.in](http://www.shengg.in)



**PRESSES**  
MECHANICAL • HYDRAULIC • SERVO

www.isgtec.com

**6000+**  
Presses

**100+**  
Transfer Presses

**100+**  
Press Lines

**26**  
Across Countries



3000T Transfer Press



4800T Tandem Press Line



1250T Hot Forming Press

Link Drive With Cushion At 1st Station

Moving Bolsters For Fast Die Change Over

Customized Load Bearing Capacity On Demand

Servo Drive Option

**Product Range:**

Transfer Presses • Tandem Lines • Progressive Presses • Standalone Presses • Servo Presses • Blanking Presses • Hydraulic Presses • Tryout & Die Spotting Presses • Gap Frame Presses • Hot Stamping Presses

Contact : **Yogesh Saxena (+91-98965-49519)**

E-mail : **presses@isgtec.com**

**PRESS BUILDER TO THE WORLD**